



information acquired from the WSHPA Hall of Fame Book, newsletters and other sources

VERN FULLER

Battle Creek, MI

inducted 1970

Was a member of the Battle Creek Horseshoe Club.

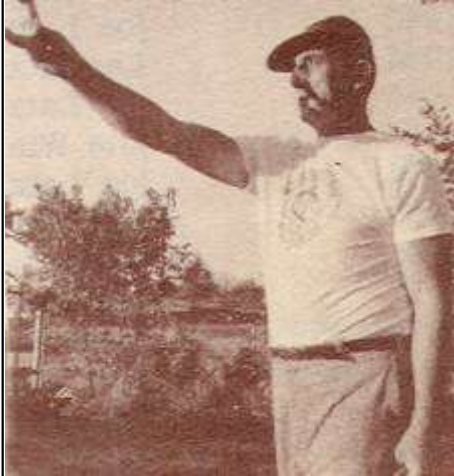
He served on the WSHPA board of directors and was the NHPA regional director of Michigan.

Vern pitched in Class A and B and would average 55 - 60%.

He won several district tournaments.

He has served on several committees, he helped with the statistics in district and stat tournaments.

Vern and Jim Davis were well known for their award winning score boards, used in many world tournaments and also at the Chief Okemos Sportsman's Club courts.



[The Horseshoe Pitcher's News Digest/ February, 1970](#)

Fuller and Davis Design NHPA Scoreboard

Pictured here is the scoring device used by the NHPA in the last three World. Tournaments.

The device was designed and made by Vern Fuller and Jim Davis of Battle Creek, Mich., long time NHPA members and players in the Wolverine state. The name plate holders and mounting were made by NHPA President Ralph Dykes and his buddy, Jack Stout.



The two inch numbers are on two inner disks with numbers from 1 to 5 and two outer rings with numbers from 0 to 9. The diameter of the inner disks is eight inches.

There is a viewing window on the other side of the device as well as name plate slots so the score can be seen from both sides.

The overall size of the device is 24 by 12 inches and one inch thick, and it weighs only six pounds.

The bottom of the device has a fitting into which a piece of thin wall pipe can be inserted for mounting in the ground. The entire device will swivel freely, allowing the score to be viewed from all angles.

The NHPA plans to have blueprints made of this entire scoring device and mounting equipment in order to make its construction available on a "do it yourself" basis by all local clubs.